

*Secondary 1*  
**PDLPROLLOUT**

Progressive. Upstream. Partnerships.

**Pre-Rollout Parent  
Engagement**



# **MR LIM'S SEGMENT**

## **TIPS & HANDLES FOR PARENTS**

Progressive. Upstream. Partnerships.

**Pre-Rollout Parent  
Engagement**

# Parent Kit

## **RAISING A DIGITALLY SMART CHILD**

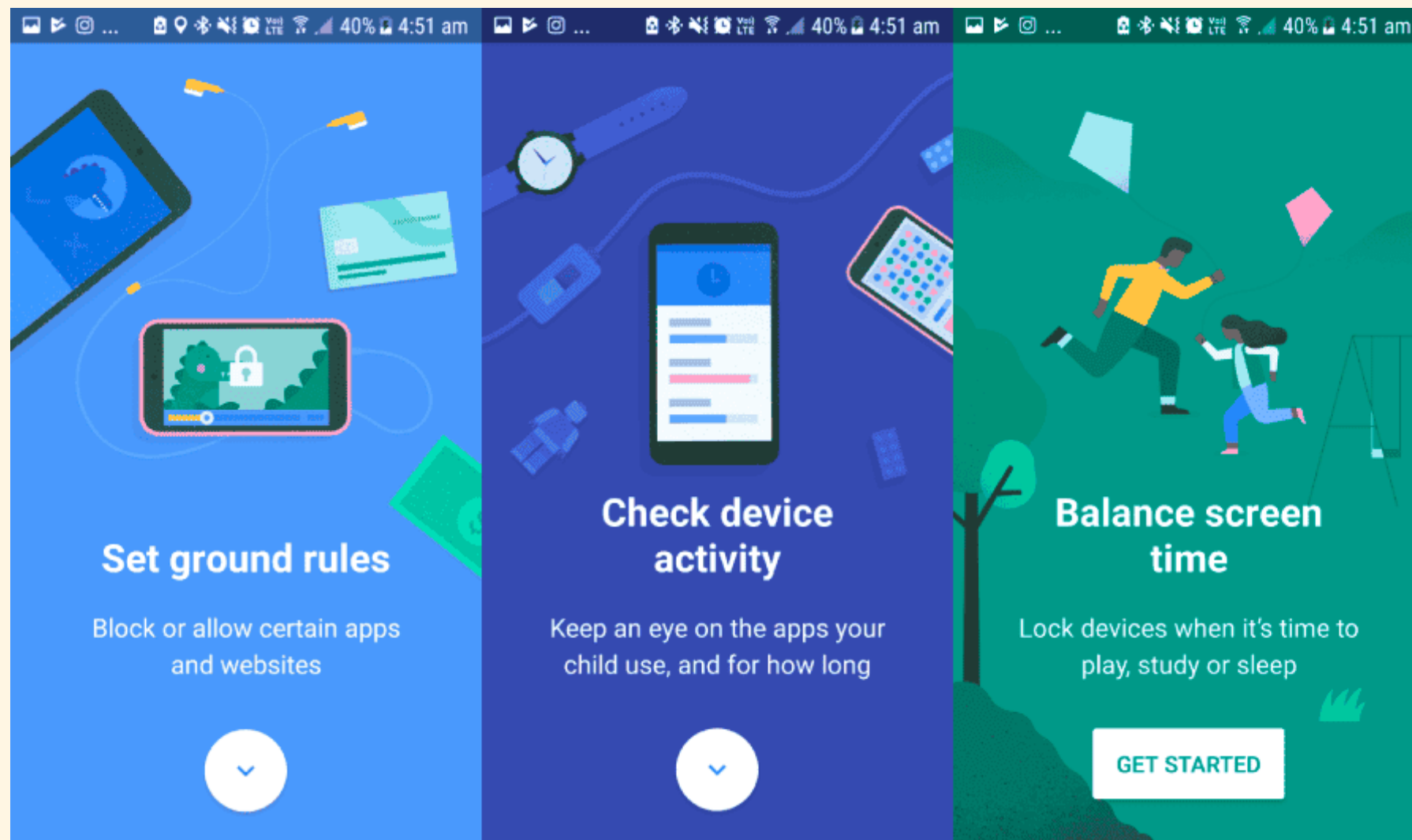
- Appropriate Device Use
- Managing Overreliance of Devices
- Handling Cyber Bullying
- Showing Cyber Kindness
- Discerning Real News from Fake News

SCAN ME





# Google Family Link



- Android and iOS Compatible
- Free
- Easy to use
- Highly Customisable





Preparing students to to  
learn at home

**R**OLE-MODEL

**R**EGULATE

be **R**REALISTIC

# ROLE-MODEL

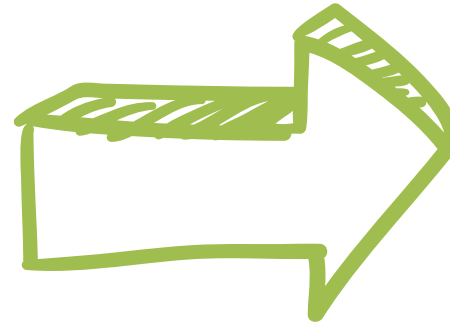
Our children observe what we do and rely on us to set an example.

## Steps you can take at home:

1



Designate certain activities or times of day where **devices should not be used** (e.g. while having meals, waiting for food)

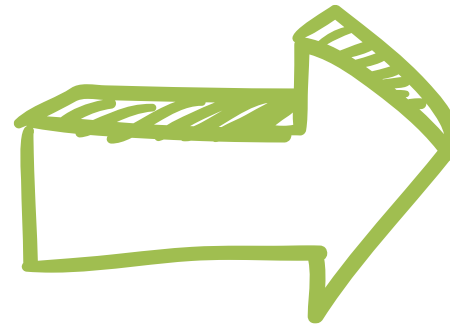


Engage them in conversation and help develop **conversational skills**.

2



Reduce time spent on devices for entertainment and leisure.



Replace with physical activities or family outings.

# REGULATE

Our children need help to set limits and to regulate their impulses.



1

## Set limits on device usage.

(Recommended 2hrs per day of screen time)

E.g.

- Time limits for entertainment
- Putting away device after a task is completed

2

## Create systems and routines to help avoid temptation.

E.g.

- Charging devices in the living room at night.
- Setting devices aside during meals or study times (especially home-based learning).



# be **R**REALISTIC

Development of Habits takes time and needs to be progressive.

## 1 Set Progressive Goals

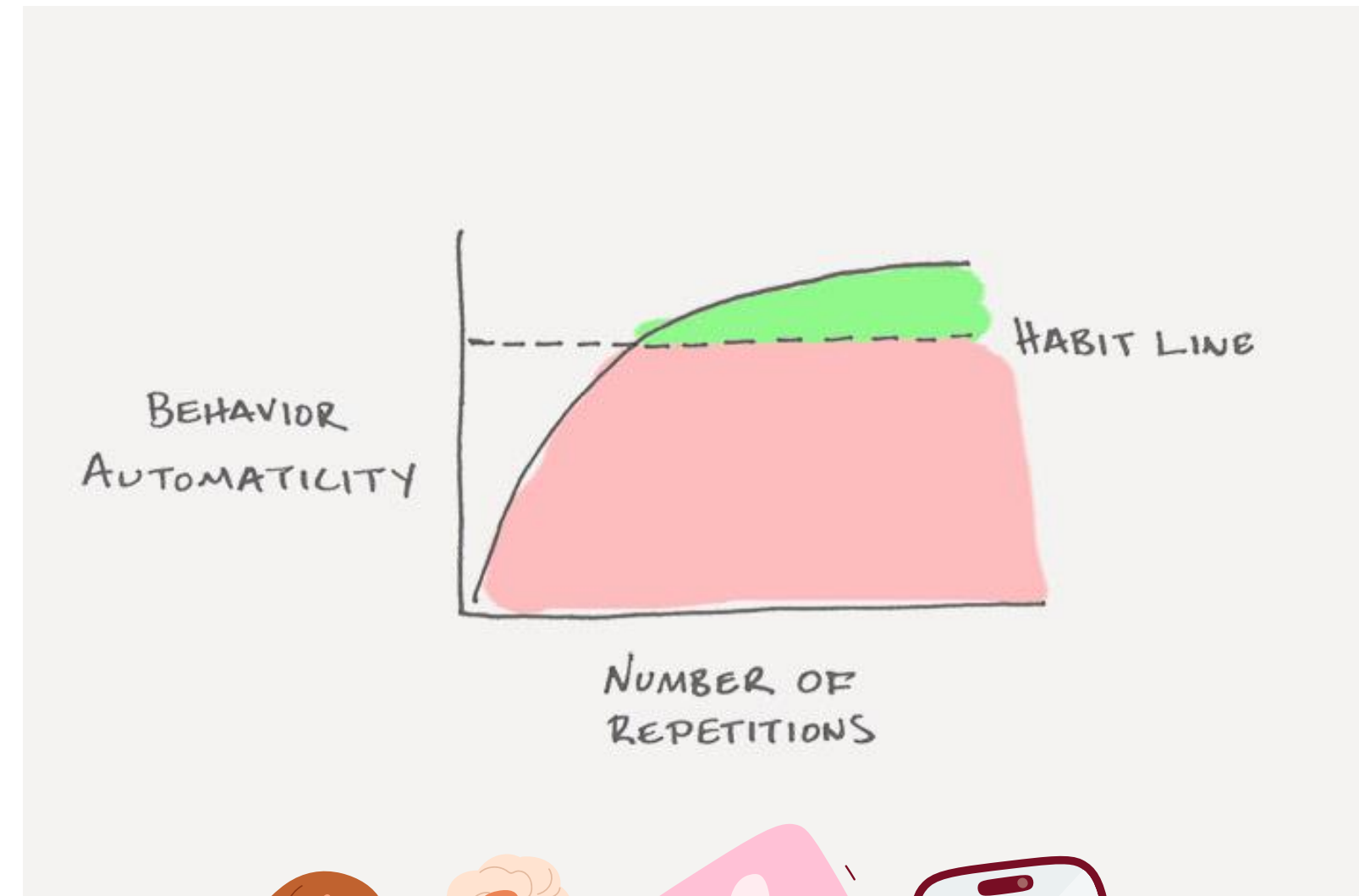
e.g.

- Reduce screen time by minutes each day working up to longer periods.
- Put devices away once a week, to twice a week up to it becomes daily habit

## 2 Consistent Reinforcement

Most intervention efforts only work if enforced consistently.

Work collaboratively with family members and care-givers to **echo a common message.**





Observing school

# R **ROUTINES**

Self-Directed Learning Periods

Greetings before & after

Responsible use of Personal Learning Device

Cleaning up venue after use

# STARS



What **R**OUTINES should I know?

**A**ttire &

**a**pppearance

**B**OOKS & MATERIALS

**C**LEANLINESS

**D**EVICE Ready

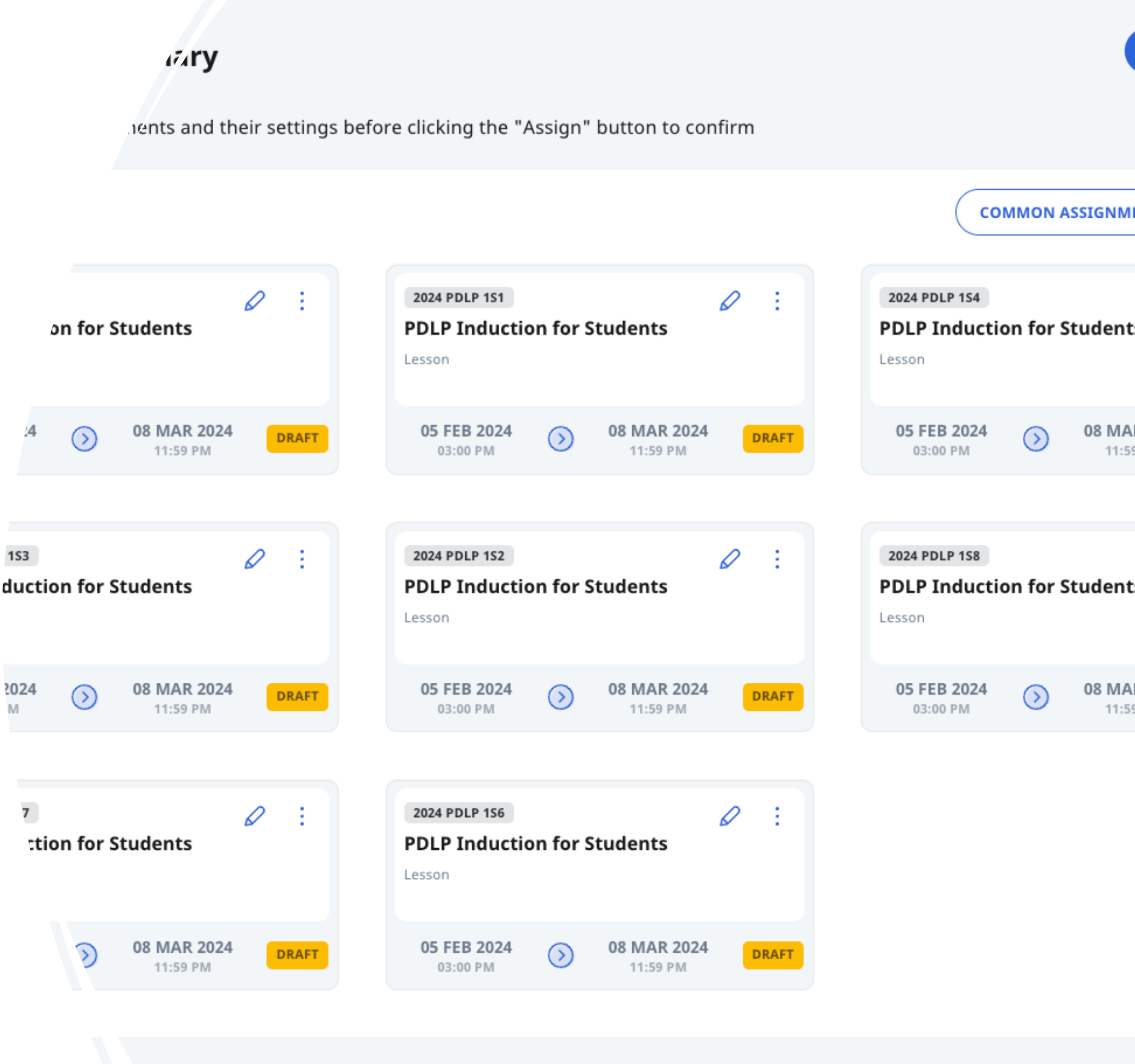
**F**OCUS Ready

**E**cosystem Ready



# SLS Lesson – PDLP Induction for Students

- To be completed by **Weds 14 Feb 2024**
- Students who do not complete it on time will have their devices kept by the school
  - Completion status will be checked on Weds morning at 7am
  - iPad will only be issued after students have completed.



# In the Works



## ENGAGE WITH PARENTS

Parents Sharing Session on  
Parenting Strategies

If you are interested please  
**scan the QR code** to  
indicate your interest.

**R**OLE-MODEL

**R**EGULATE

be **R**EALISTIC





# **MR WONG'S SEGMENT**

## **ROLLOUT PLAN AND PREPARATION**

Progressive. Upstream. Partnerships.

**Pre-Rollout Parent  
Engagement**



# Student iPad Roll-out 2024 - Parent Briefing



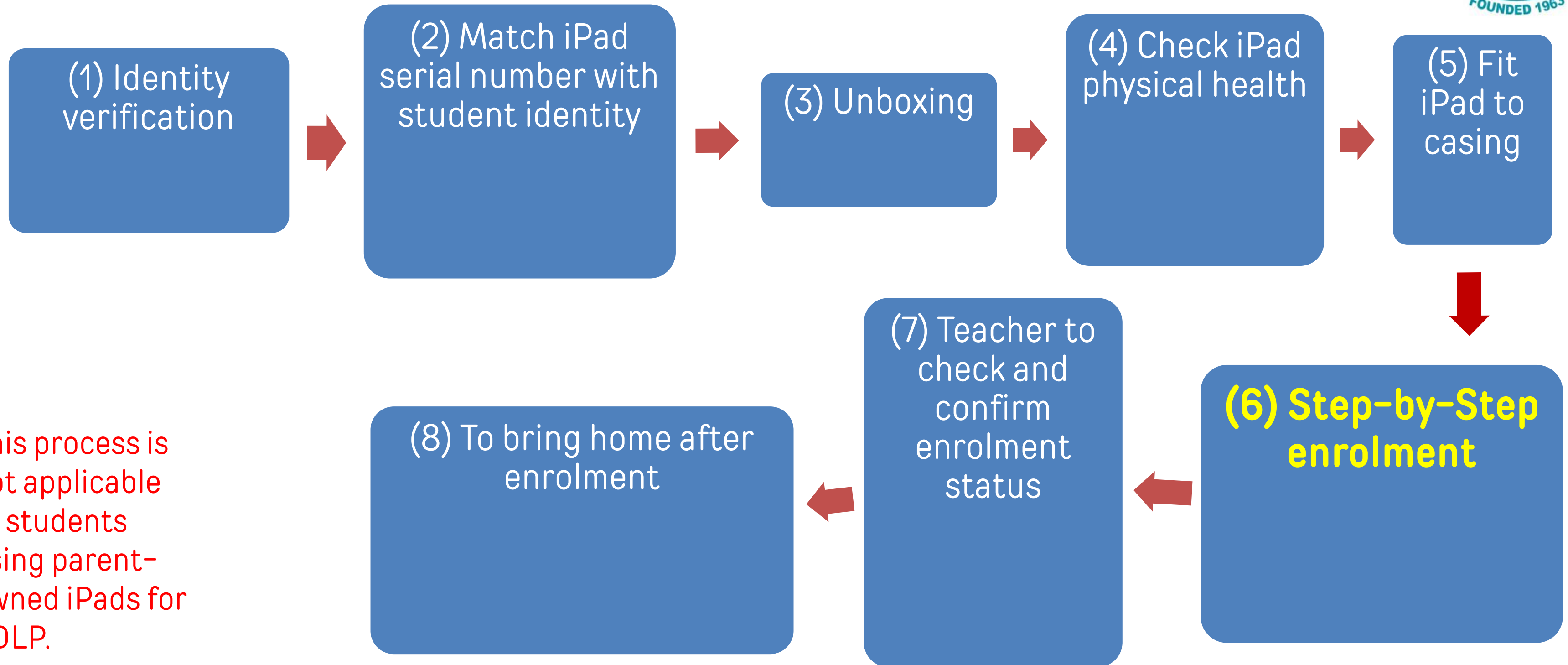
# Overview



- **Roll-Out date:**  
**14/02 Wednesday (T1W6)**
- Venue: Respective classrooms
- 1S1 to 1S4 – report at 7.50 am  
(8 am to 10 am)
- 1S5 to 1S8 – report at 10.20 am  
(1030 am to 1230 pm)
- Parents need not be present
- Students will be instructed and guided to complete all steps required, *ONE STEP AT A TIME TOGETHER*



# Student iPad Rollout Day – Process



This process is not applicable to students using parent-owned iPads for PDLP.



# Step-by-Step Enrolment – Key Steps



- Unboxing
- Check for exterior defects
- Basic iPad setup
- Passcode setup
- Check camera
- Check Apple Pencil
- Check iPad storage size
- Mobile Guardian enrolment using Student iCON credentials
- Pair Apple Pencil 1 to iPad
- Others e.g. MAID setup, cyber wellness briefing





# Student-Owned iPads



- Students using iPads not purchased via the school will also enrol their iPad on Rollout Day
- Students are to report to Project Room 4 at the Library
- Time of report – same as students reporting to their classrooms for iPad enrolment
- Bring along fully-charged iPad and Apple Pencil
- Host Teacher will guide you through the enrolment process





# Preparation – Actions/Things to Bring (applicable to all students)

- EZ-link or birth certificate or passport copy (for photo identification)
- Think of a secure 6-digit passcode (for your iPad)
- Paper and Pen (to record Passcode)
- A medium-sized bag to bring iPad, accessories and packaging home
- Student iCON user ID and password
- Personal handphone (if you have one) with student iCON Google account logged out
- Activate your student iCON account before the Rollout Day (for students whose first year of study in Singapore is 2024)



# Preparation – Actions/Things to Bring



## Actions to Take

- Test the log-in of your iCON account before the Rollout Day
- Log out of your Student iCON account on all devices e.g. handphone, other iPads, personal computers, etc
- You can log in to your Student iCON account on all devices again after the Rollout



# Absentees for iPad Rollout



- Inform the school via the FTs promptly if you are not available to come for the iPad rollout on 14/2
- Alternate iPad Rollout Day – 20<sup>th</sup> February Tuesday 3.40 pm at Project Room 4, Library





# Student iCON account - Assistance

Contact 1: School ICT Manager - Mr Giam Chin Leong ([giam\\_chin\\_leong@moe.edu.sg](mailto:giam_chin_leong@moe.edu.sg))

Contact 2: School Desktop Engineer – Mr Zulhairi ([g-ncs3304sde@ncs.com.sg](mailto:g-ncs3304sde@ncs.com.sg))

You can also approach the Media Resource Office (Blk A, Level 3) for assistance.



# Post Roll-Out Instructions



- Charge iPad to 100%
- Charge Apple Pencil to 100%
- Keep Collection Note and Packaging Box for **at least 7 days**
- Obtain and paste a suitable iPad screen protector (**highly recommended**)
- Obtain a suitable Pencil sleeve to protect Pencil and prevent loss of Pencil cap (**highly recommended**)
- Label the iPad, casing and Pencil with your name



# Post Roll-Out Instructions



- Orientate yourself to the features and functions of the iPad
- Ensure that the school-assigned apps are successfully pushed to the iPad. This process can take up to 3 days.
- Sign in to the Microsoft Office apps using your Student iCON account
- Set up your Student Zoom account using your Student iCON account
- **Bring iPad, Apple Pencil, ear phone and casing with keyboard to school everyday starting 15/2 Thursday**



# Thank you!



You have come to the end of this segment

**For further enquiries, please contact:**

Contact 1: School ICT Manager - Mr Giam Chin Leong ([giam\\_chin\\_leong@moe.edu.sg](mailto:giam_chin_leong@moe.edu.sg))

Contact 2: School Desktop Engineer – Mr Zulhairi ([g-ncs3304sde@ncs.com.sg](mailto:g-ncs3304sde@ncs.com.sg))

You can also approach the Media Resource Office (Blk A, Level 3) for assistance.





**If you have any questions on queries, please feel free to contact your child's Form Teacher**

**Communication Times:**

*Weekdays between 7:30am - 6pm*

**Additional Resources:**

**PDLP@Swiss Cottage**

<https://www.swisscottagesec.moe.edu.sg/swiss-experience/pdlpswiss-cottage/>

**Swiss PDLP - Curated Learning Experience**

<https://go.gov.sg/scsspdlpstudent>





## Curated Learning Experience

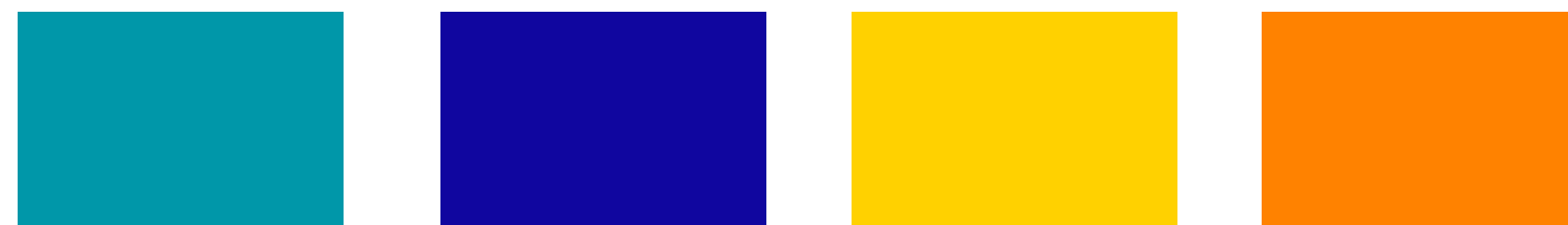


Welcome to the Swiss Cottage Secondary School's PDLP Curated Learning Experience.

Here you will find resources to support and equip you to become **Responsible Users of Technology**. In order to become responsible users of technology, we must know how our device can be prepared for learning, know how to maintain our devices, use our devices meaningfully for our learning and safeguard ourselves when using the device.

Preparation Device Learning Protection

<https://go.gov.sg/scsspdlpstudent>





OUR PARTNERS  
IN EDUCATION

